



## Wholeschool approach to alcohol and other drugs education

At Jerramungup District High School we have identified the following practices and strategies to support a wholeschool approach in alcohol and other drugs prevention education (AOD). This approach embeds student knowledge, skills, and understanding at a whole-school level and strengthens relationships and partnerships with parents and communities.

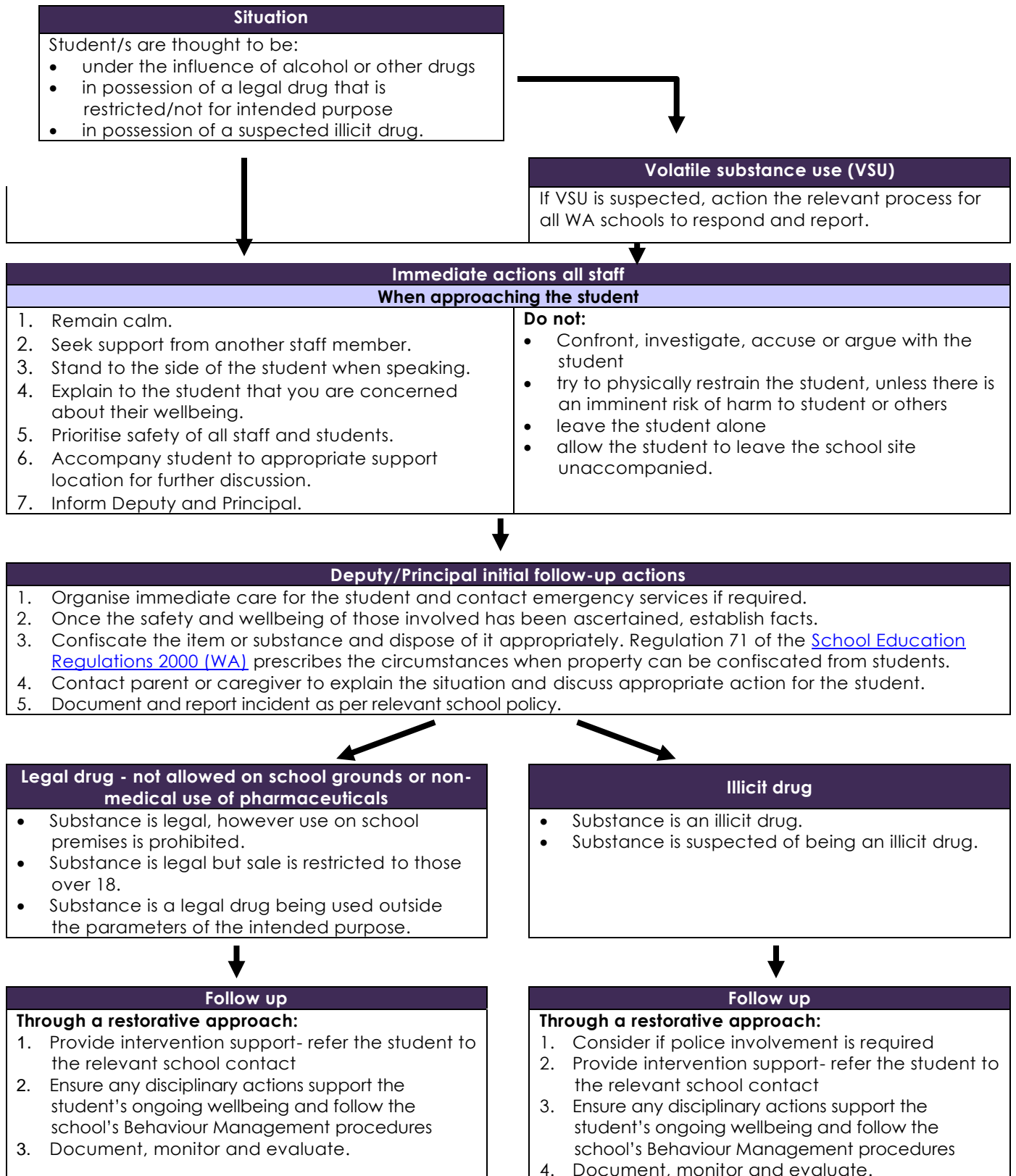
Contact Road Safety and Drug Education (RSDE) for resources and support on 9402 6415 or via [rsde.rfa@education.wa.edu.au](mailto:rsde.rfa@education.wa.edu.au)

Teaching and learning	School culture and environment	Parents, families, and communities	Student voice and agency	Stakeholder, group, and agency collaboration
<p>Implement the WA Health and Physical Education Curriculum, including alcohol and other drug education, in Years P-10.</p> <p>Use resources available from <a href="http://myresources.education.wa.edu.au">myresources.education.wa.edu.au</a></p> <ul style="list-style-type: none"> <li>o AOD education P-6</li> <li>o AOD education 7-9</li> <li>o Primary and Secondary e-cigarettes and vaping</li> <li>o WA Schools Anti-vaping Toolkit</li> </ul> <p>Provide professional learning for teachers on:</p> <ul style="list-style-type: none"> <li>• Primary AOD education</li> <li>• Secondary AOD education</li> <li>• E-cigarettes and vaping in school communities</li> <li>• Volatile substance use (VSU) in school communities</li> </ul> <p>Develop incident management and intervention support templates.</p>	<p>Use templates from <a href="http://myresources.education.wa.edu.au">myresources.education.wa.edu.au</a> to develop incident management and intervention support.</p> <p>Develop and enforce school policies regarding the possession and use of alcohol, tobacco, e-cigarettes, and other drugs.</p> <p>Promote positive school culture by implementing SDERA's Changing Health Acting Together (CHAT) initiative.</p> <p>Display AOD-related posters and information throughout the school.</p>	<p>Provide parent workshops on AOD education and student well-being.</p> <p>Use RSDE resources to communicate AOD education information with parents/carers.</p> <p>Involve the school board and P&amp;C in whole-school planning.</p>	<p>Involve students in the development of AOD policies and strategies.</p> <p>Facilitate peer-led education initiatives and mentoring programs.</p> <p>Engage Student Council in decisions and incentives.</p>	<p>Partner with local health services and law enforcement to support AOD education.</p> <p>Provide guidance on engaging external agencies, following guest speaker guidelines.</p> <p>Maintain up-to-date referral pathways for students needing support.</p>

<p>Current practice: Health lessons include AOD education aligned with WA Curriculum.</p> <p>Staff access professional learning on AOD education annually.</p> <p>Students participate in awareness programs (e.g., Drug Aware, SDERA).</p>	<p>Current practice: Clear behaviour expectations communicated to students.</p> <p>AOD-free school environment policy enforced.</p>	<p>Current practice: Regular parent newsletters include AOD-related content.</p> <p>Parent information sessions are held annually.</p>	<p>Current practice: Student feedback on well-being topics collected annually.</p>	<p>Current practice: Collaboration with local health services for targeted interventions.</p>
<p>Actions: Increase integration of AOD education across learning areas.</p> <p>Ensure all staff complete RSDE professional learning modules.</p>	<p>Actions: Review and update AOD school policies.</p> <p>Implement student and staff well-being initiatives to reduce AOD risks.</p>	<p>Actions: Increase engagement with parents through digital platforms.</p> <p>Establish a parent support network for AOD-related concerns.</p>	<p>Actions: Increase student leadership opportunities in peer education.</p>	<p>Actions: Strengthen partnerships with community organizations.</p> <p>Host guest speaker sessions on AOD topics.</p>
Who: Health & Physical Education Teacher.	Who: Leadership Team	Who: Leadership Team	Who: Leadership Team	Who: Leadership Team
When: Ongoing	When: Ongoing	When: Ongoing	When: Ongoing	When: Ongoing
<b>Prepared by: Arianne Zahra</b>		<b>Endorsed by: Haidee Robb</b>		<b>Date: 20/02/2025</b>
				<b>Review date: 20/02/2025</b>

## Responding to Alcohol and Other Drugs

School staff use this information to [respond to and support students who are in possession or suspected of being under the influence of alcohol or other drugs](#), including e-cigarettes.



## Intervention Support

### Situation

Intervention support may be required as a result of:

- a drug related incident where a student has been:
  - under the influence of alcohol or other drugs
  - in possession of a legal drug
  - in possession of a suspected illicit drug.
- disclosure by student or other.

### Immediate Actions

#### **Reassure student/s that their health and wellbeing is the primary concern**

- Assess student wellbeing
- Seek relevant referral information.
- Explain to student/s that the focus of the intervention is to support their health and wellbeing.
- Acknowledge your role in providing support to the student.
- Consider [cultural responsiveness](#).
- State the boundary of confidentiality.
- Gauge student willingness to engage with the intervention support process.

#### **Raise and clarify the situation with student/s**

- Clarify the situation, advise of your concerns.
- Communicate with empathy.

#### **Support students through the referral process**

- Involve students in the intervention support process according to their needs.
- Provide the student with an explanation and reassurance of the process that will follow.
- Follow the school's reporting and record keeping procedures.

### Student Wellbeing Interventions

Develop and implement an individual student intervention plan:

- Include student in the development of their wellbeing plan
- Consider student's family circumstances and needs
- Ensure student is connected to the support they need either inside or outside the school